

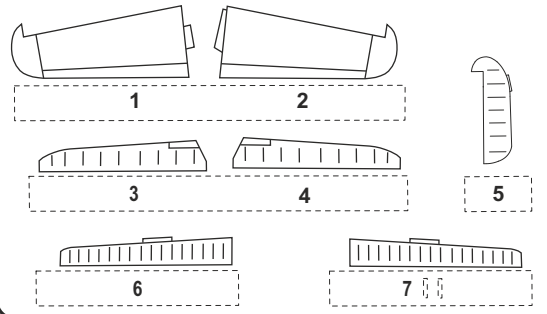
7397
1/72

Ki-61-I Tei "Hien"
Control Surface Set
for Hasegawa kit



Visit our official website and e-shop at
www.cmkkits.com

Polyurethane parts PUR



Díly ohnuté popř. pokroucené vlivem teplotních změn a stárnutí materiálu, mohou být narovnány do požadovaného tvaru pomocí proudu teplé vody nebo vzduchu (fén na vlasy). Různé drátky a tyčinky nejsou přiloženy.
K lepení použijte kyanoakralátové lepidlo.
Kontaktní plochy doporučujeme před lepením odmastit.

*Parts slightly distorted and bended owing to temperature changes or due to material ageing can be straightened to requested shape by hot water or hot air jet (hair dryer). Wires and rods not included.
For best results gluing use cyanoacrylate glue. Contact areas ungrease is recommended before gluing*

OSTATNÍ SETY CMK 1/72 / OTHER 1/72 CMK SETS

7263 A6M3 model 32 Zero - Tail cone+tail planes for Tamiya
7264 A6M3 model 32 Zero -

Landing flaps+ailerons for Tamiya kit

7265 A6M3 model 32 Zero - Engine set for Tamiya kit

7266 A6M3 model 32 Zero -

Armament set and exterior for Tamiya kit

7374 Ki-84 Hayaté - Cockpit set for Hasegawa kit

7375 Ki-84 Hayaté - Armament set for Hasegawa kit

7376 Ki-84 Hayaté - Control surface set for Hasegawa kit

7392 J2M3 Raiden - Cockpit set for Hasegawa kit

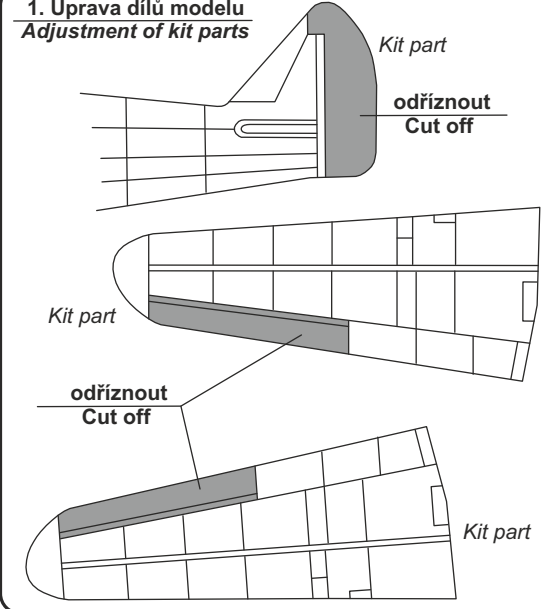
7393 J2M3 Raiden - Armament set for Hasegawa kit

7395 J2M3 Raiden - Wing flaps for Hasegawa kit

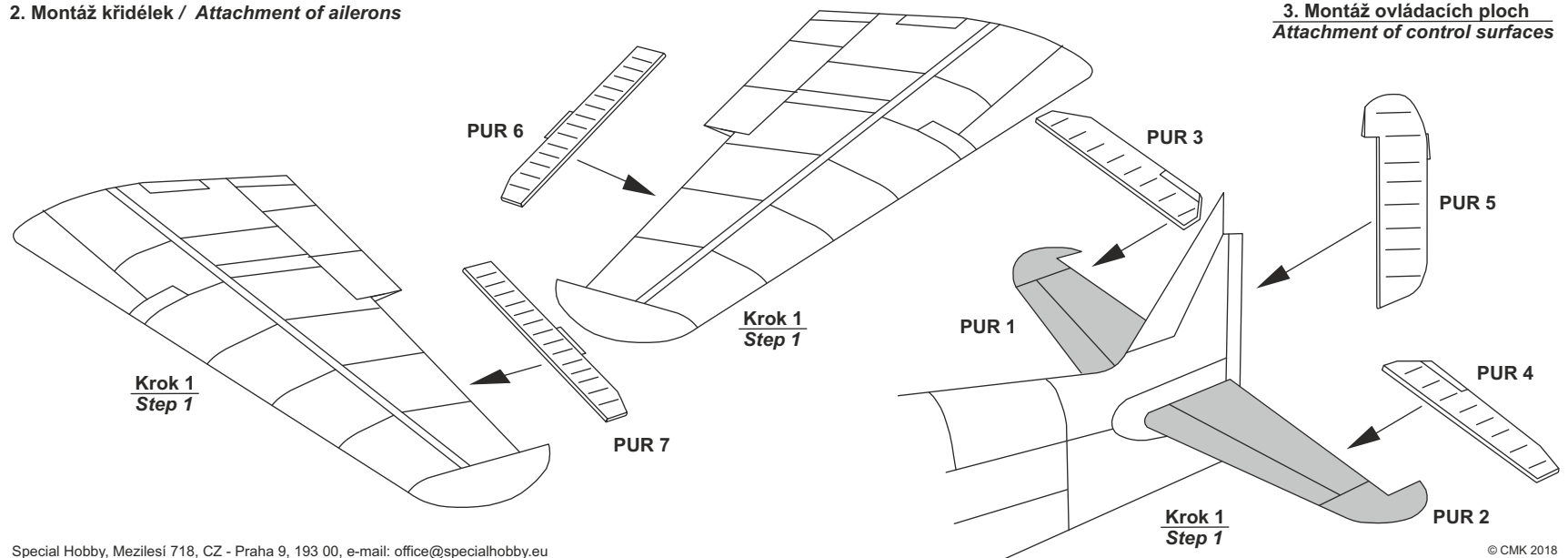
7396 J2M3 Raiden - Wheels wells and covers for Hasegawa

Q72 305 J2M3 Raiden - Seat with belts for Hasegawa kit

1. Úprava dílů modelu
Adjustment of kit parts



2. Montáž křidélek / Attachment of ailerons



3. Montáž ovládacích ploch
Attachment of control surfaces